



Christ's College Guildford

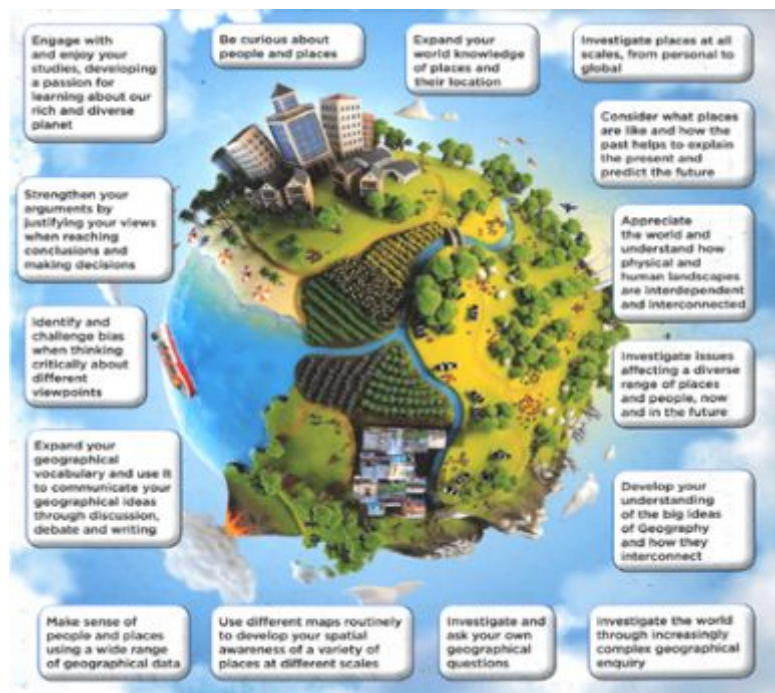
Principal: Sarah Hatch. BA (Hons), QTS, PGC, NPQH
www.christscollege.surrey.sch.uk



Subject: Geography

Year Group: 10

Curriculum Intent:



College Values:

In addition to a passion for our planet and the environment we live, work and play in Geography naturally embraces every core value. Students are encouraged to live the core values through their knowledge, understanding and evaluation of geographical issues. Stewardship is a core human value which compliments all the humanities.

Knowledge and Skills:

Through KS4, students will continue to build on knowledge gained through KS3. We follow the Edexcel B GCSE Geography specification which can be found here

https://qualifications.pearson.com/content/dam/pdf/GCSE/Geography-B/2016/specification-and-sample-assessments/Specification_GCSE_L1-L2_Geography_B.pdf

Key topics are Development, Urbanisation, UK Human and physical Landscapes, Hazards, Biomes including a decision making question. The GCSE course includes fieldwork in both an urban and natural environment and we have two compulsory trips which are free of charge to Guildford town centre and Southsea/The South Coast. Additionally, we run a range of other trips to various local and National locations which enable students to experience geography in a primary context, outside. The course is completed by February half term in year 11 and we spend the remainder of time revising before the exams.



Christ's College Guildford

Principal: Sarah Hatch. BA (Hons), QTS, PGC, NPQH
www.christscollege.surrey.sch.uk



Assessment:

The GCSE Geography exam is a universal set of 3 papers, each an hour and 30 minutes long, which examine the topics mentioned above.

Homework:

Homework is set weekly on SMHW and covers a range of tasks that extend the learning in lessons. Seneca is set regularly to review topics and look back. Additionally, a list of stretch and challenge tasks are set alongside each topic that students can use to reach 'mastery' level in their subject.

Cultural Capital:

Fieldwork and outdoor learning are central to our geography curricula and so we provide a range of fieldwork opportunities in the local area and further away. We have our own weather station on the roof of the building and we like to work with other humanities subjects to promote the core values. A list of stretch and challenge tasks are set on SMHW when we start a new topic and remain there for the rest of the school year. These include new articles, videos, websites and useful information. We also like to promote earth learning through our collaboration with science. We also post links to programs and documentaries that are pre-recorded which we think are useful.

